



**安平县东捷丝网制品有限公司**

**ANPING COUNTY DONGJIE WIREMESH PRODUCTS CO.,LTD.**



# Catalogue

## Company introduction

1.Anti-vertigo mesh

2.Perforated metal fence

3.Sports Fence

4.Isolation fence

5.Zinc steel fence

6.3D Bending fence

7.Bridge Guardrail

8.Anti-theft Dense Mesh

9.Barbed Wire

10.Razor Barberd Wire

11.Steel Grating

12.Anti-skid Plate

## Company introduction



Dongjie factory was established in 1996, We have 28 years of production experience.

We are specialized in the development, design, production, and sales of various protective fence and supporting parts. Dongjie have dedicated technical team that can design drawings according to customer requirements, recommend the right product type, and design unique solutions for you.

We have established cooperation with customers in more than 50 countries, such as the United States, France, Russia, Vietnam, Singapore, Australia, Chile, Brazil, Thailand, India, Ethiopia, Nigeria and so on.

Dongjie looks forward to your visit and consultation.

## Anti-vertigo Mesh



Anti-throwing mesh, also known as anti-glare metal mesh, highway guardrail mesh, bridge isolation mesh, metal expansion mesh, etc. Anti-throw mesh refers to the metal plate after special mechanical processing, forming a mesh condition of the tensioning metal mesh. It can effectively ensure the continuity and lateral visibility of anti-glare facilities, and can isolate the up and down lanes to achieve the purpose of anti-glare and isolation, and is a very effective highway guardrail product.

Anti-dumping mesh can be used for highways, overpasses, flyovers, viaducts, expressways, etc.



Material: carbon steel plate, galvanized plate, stainless steel plate, etc

Process: expansion drawing, welding, galvanizing, dipping, spraying, etc

Specifications, colors: multiple specifications, support customization

Material	Thickness	Strand	Hole size	Mesh size
GI /iron	0.8-3mm	3-7mm	40*80mm	650*4000mm
GI /iron	0.8-3mm	3-7mm	40*80mm	700*4000mm
GI /iron	0.8-3mm	3-7mm	40*80mm	750*4000mm
GI /iron	0.8-3mm	3-7mm	40*80mm	800*4000mm
GI /iron	0.8-3mm	3-7mm	40*80mm	850*4000mm
GI /iron	0.8-3mm	3-7mm	40*80mm	900*4000mm
GI /iron	0.8-3mm	3-7mm	40*80mm	950*4000mm
GI /iron	0.8-3mm	3-7mm	40*80mm	1000*4000mm

**Product features:**

The structure is stable and durable

Simple disassembly, easy maintenance, easy cleaning, long service life

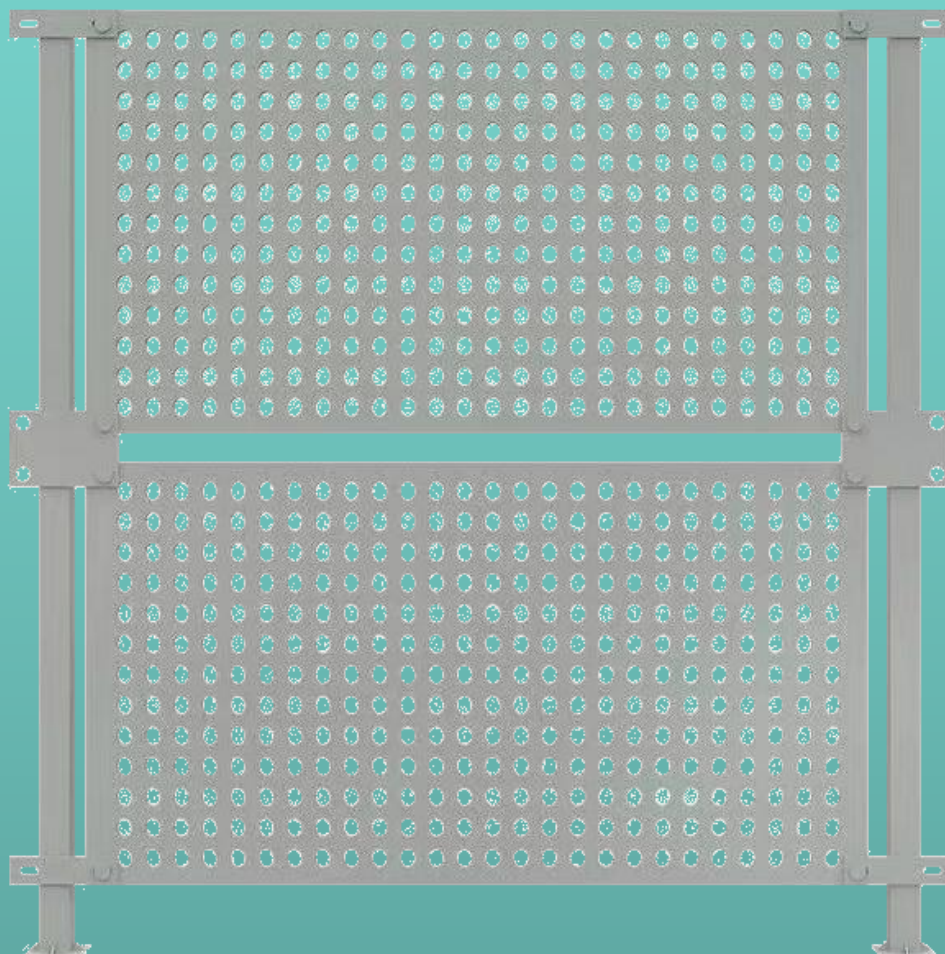
## Perforated Metal Fence

Perforated metal fence is a kind of isolation net with perforated metal mesh as the main material, through the use of welding technology, punching different sizes of mesh, the arrangement is straight row wrong row, surface treatment, the use of excellent galvanized steel pipe is not easy to rust.



Surface treatment using electrostatic spraying surface layer color can be freely matched, can be made into different styles of guardrail mesh, It can be used

for environmental protection noise control barriers in transportation and municipal facilities such as highways, railways and subways across urban areas, sound insulation and noise reduction boards for building object walls, generator rooms, factory buildings and other noise sources, and perforated boards with good ventilation can also be used for coastal typhoon protection. It has the characteristics of durable, beautiful and generous, good protection and so on.



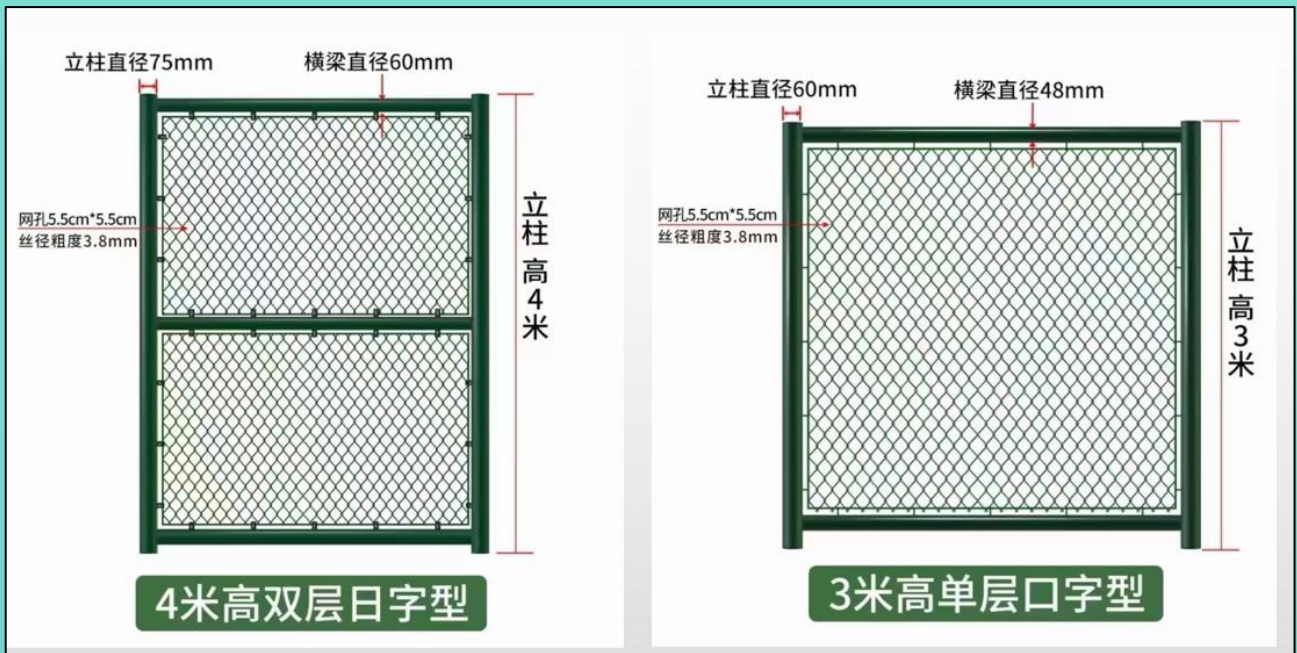
## Sports Fence

Sports fence belongs to a kind of site purse Seine, which is also known as "sports purse Seine". It is made of wire of various raw materials, including PVC wire, hot and cold galvanized wire and so on. It has the characteristics of strong impact resistance, beautiful appearance, corrosion resistance and good protection.

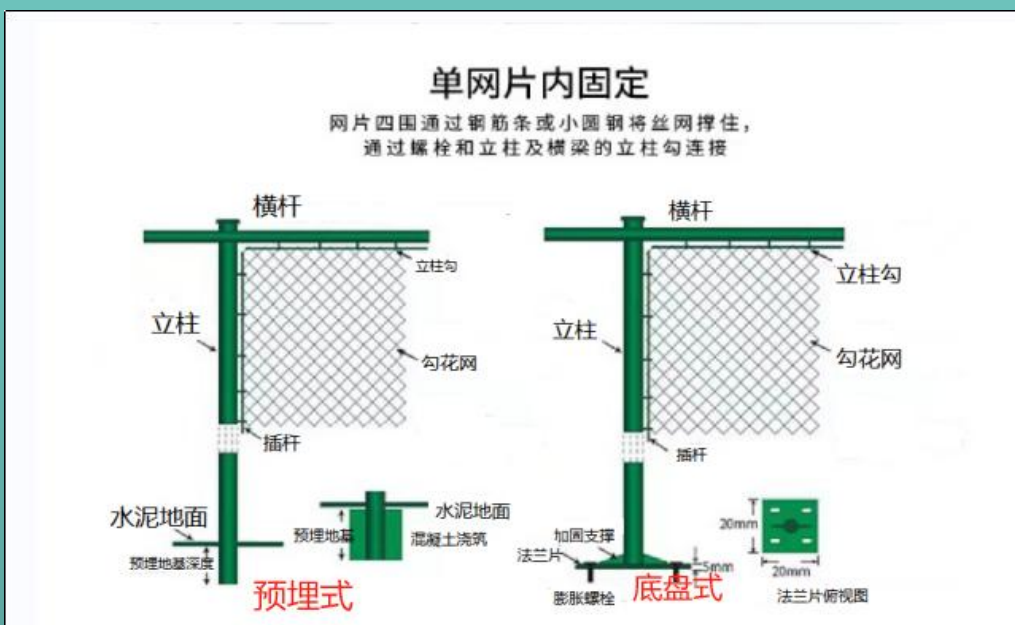


Fence size	Post	Crossing beam	Hole size
4*3m	75*2.5mm	60*2mm	5.5*5.5cm
4*3m	75*2.5mm	60*2mm	5.5*5.5cm
3*3m	75*2.5mm	60*2mm	5.5*5.5cm
2*3m	75*2.5mm	60*2mm	5.5*5.5cm
3*3m	60*2.0mm	48*2mm	5.5*5.5cm

## Fence specification diagram



The biggest feature of the stadium fence net is strong flexibility, and the structure, shape and size of the net can be adjusted at any time according to the requirements. According to the installation method, it can be divided into embedded installation and bottom plate installation, and the specific installation method is determined according to the ground situation of the construction site.



Under normal circumstances, the cement floor is installed with the bottom plate type, and the column with flange can be installed on the ground with expansion bolts; The embedded column requires concrete building foundation in advance to fix the column, and the embedded depth of the column is 50-100 cm.

Installation mode



Bottom tray type&Embedded type



## Isolation Fence

The raw material is welded with cold-drawn low carbon steel wire into mesh. After the mesh is welded with the column, it is dipped/sprayed with plastic technology, which is bright and durable.



There are many styles of isolation fence, which can be customized according to requirements. Common styles are ordinary mesh, single door, open door, sliding door.



Workshop isolation grid is widely used in the isolation of the workshop warehouse or between the market stalls, good protective performance, the biggest advantage is that the floor area is small, increase the effective space, strong light transmission and low requirements for auxiliary lighting facilities. It is widely used in the isolation of workshop warehouses or between market stalls, and the isolation and protection of important mechanical parts.

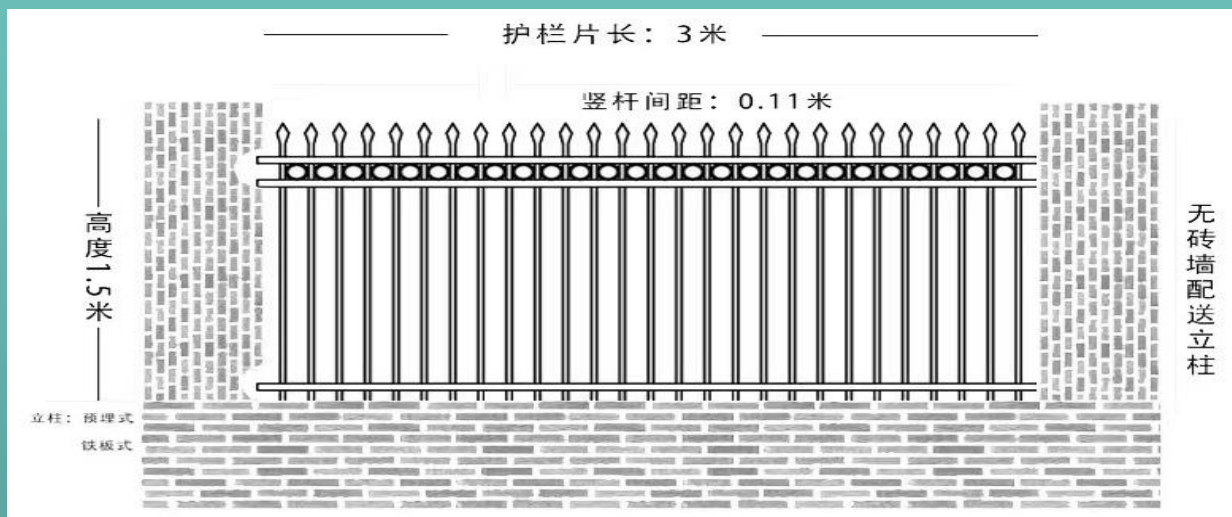
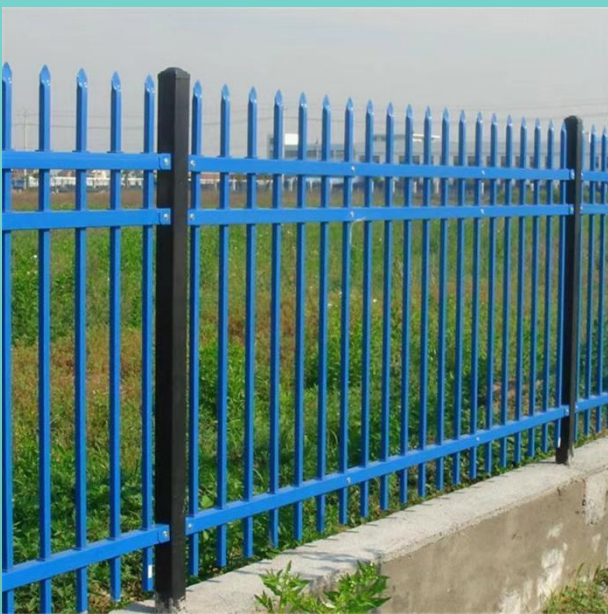


Using the hot plastic process, the coating is uniform and full, the color is soft and beautiful, has good insulation, weather resistance and durability, no maintenance, has a strong decorative and good protection.



## Zinc Steel Fence

Zinc steel fence, also known as wallfence, refers to the use of zinc alloy materials made for different parts, with different functions of the enclosure railing, because its later is treated with electrostatic spraying surface layer, so that it has high strength, high hardness, beautiful appearance, bright color and other advantages. The use scenes include the walls of schools, factories, communities, courtyards, villas, etc., and the flower beds, lawns, gardens, roads, gardens, riverside, balconies, stairs and other places in highway and subway construction.



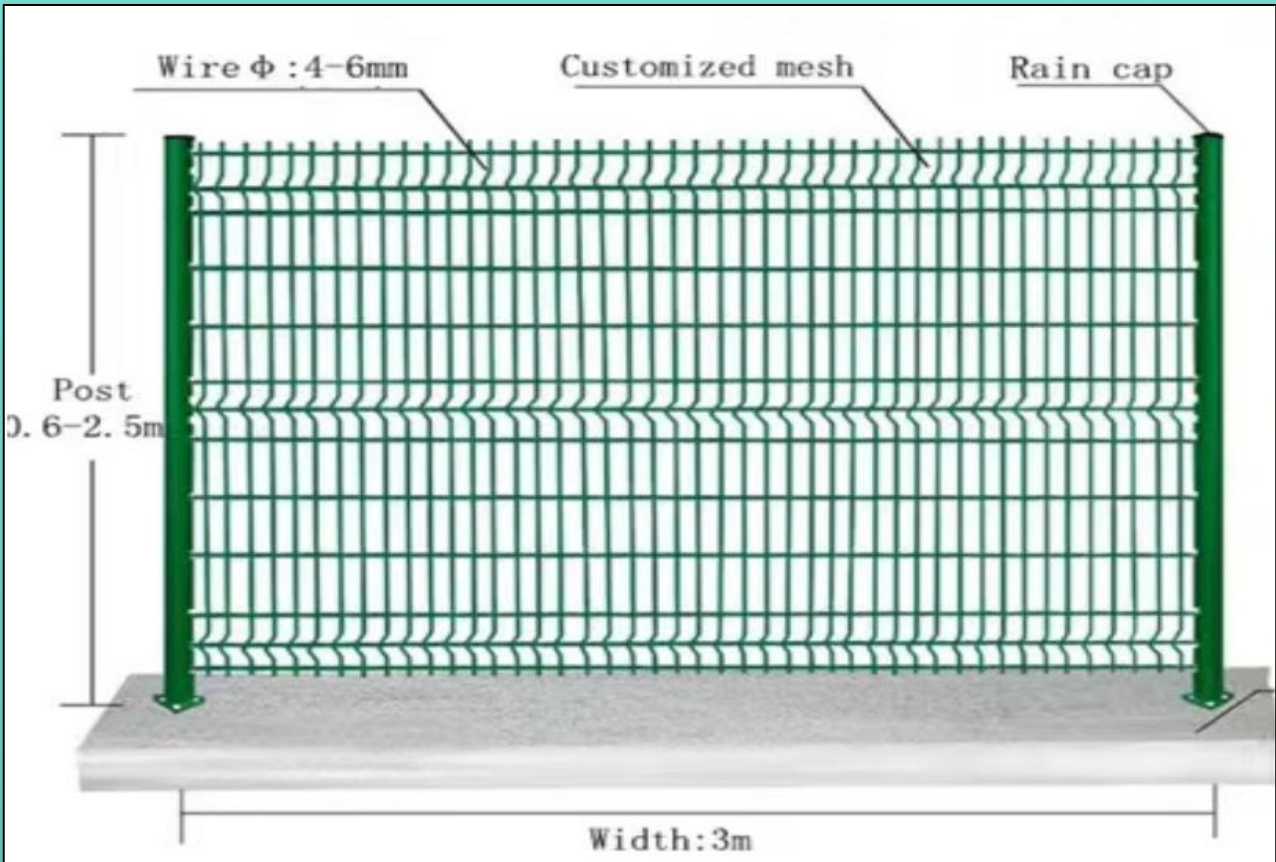
## 3D Bending Fence

3D bending fence is generally made of high temperature impregnated low carbon steel wire mesh + peach column, which is mainly used for isolation and protection of highways, villa communities, airports, public places, scenic and sightseeing areas. Peach pillar Y-shaped gillnets can also be used for the protection of high-end villas, airports and prisons.

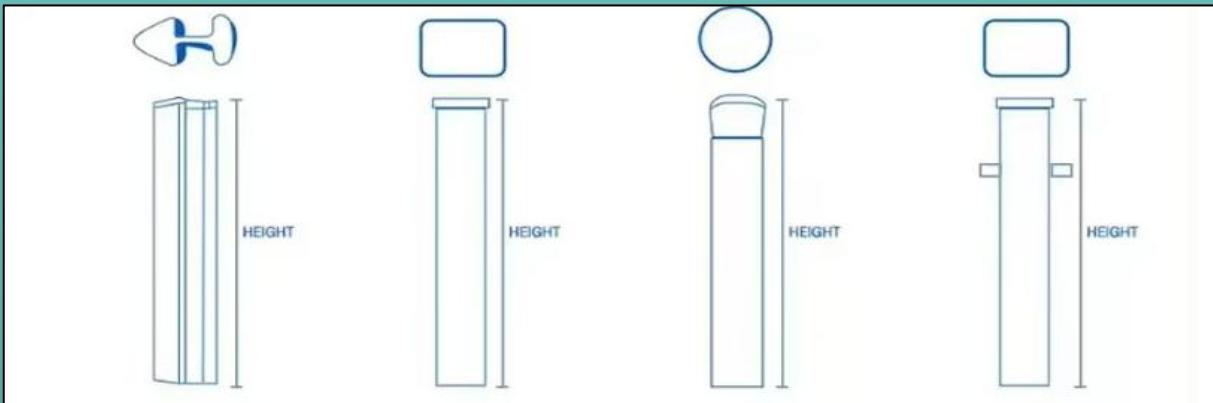




**Installation mode**



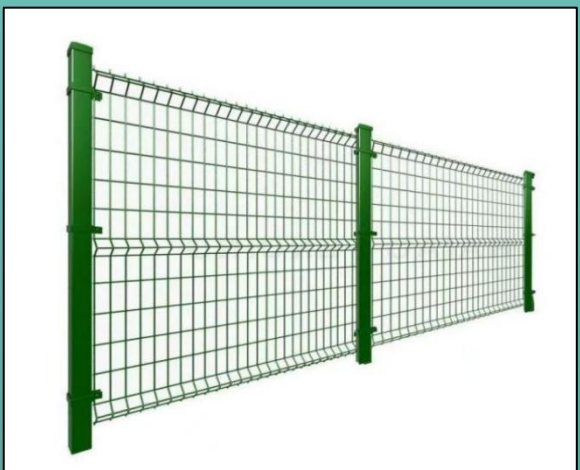
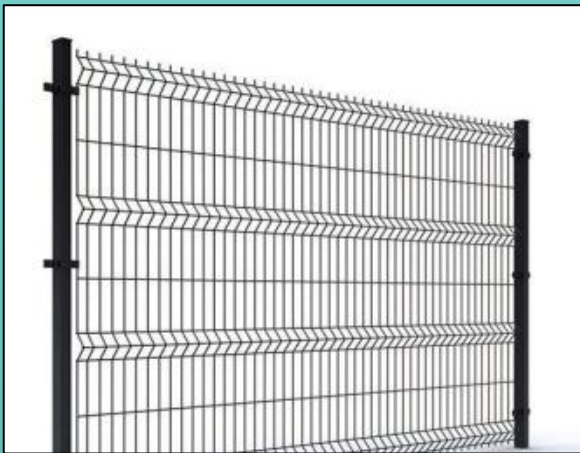
**Columns and mounting accessories**

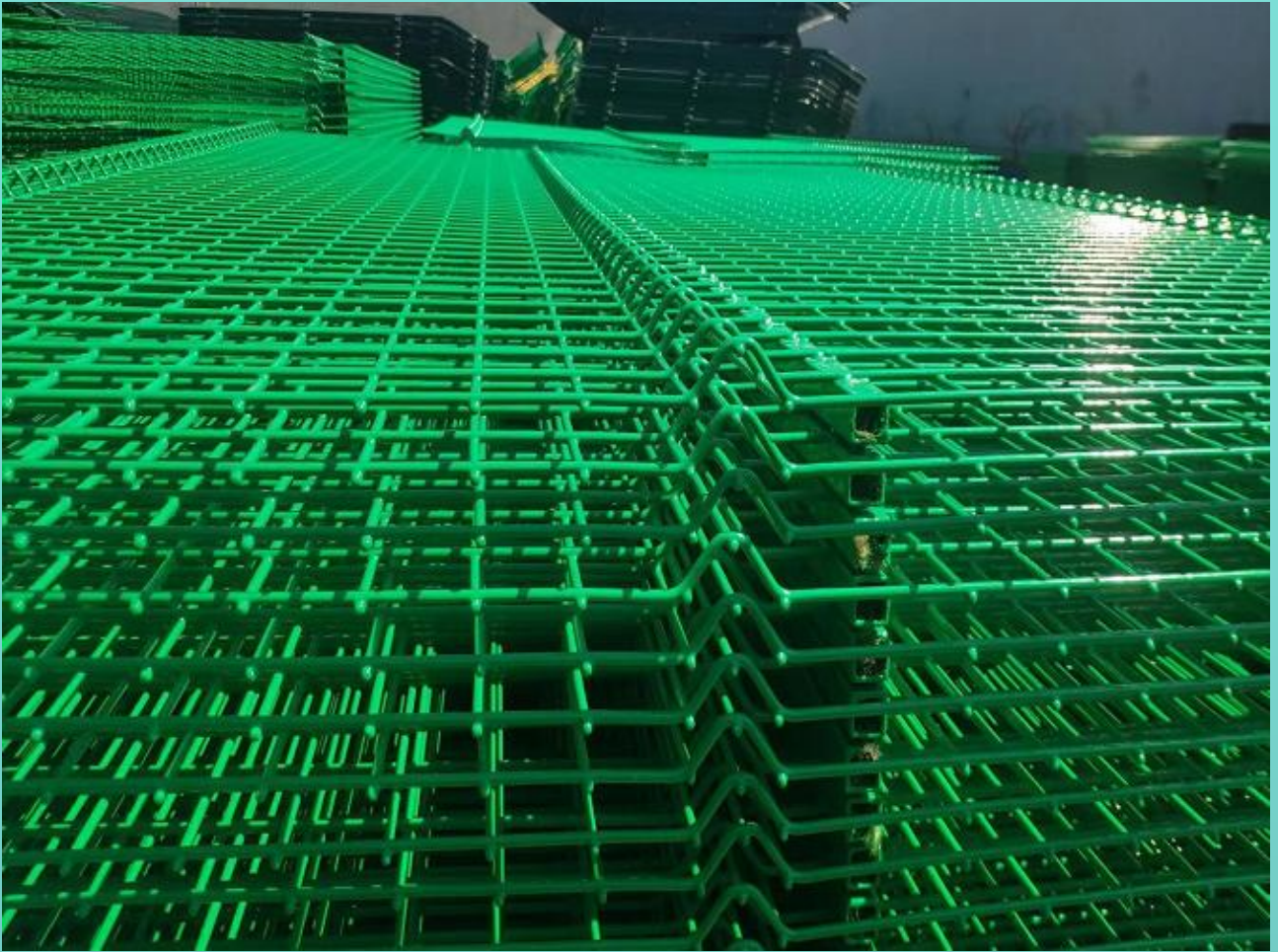


## Mesh column connection mode



Product color can be customized, common colors are dark green, grass green, gray, white, red, yellow, blue and so on.





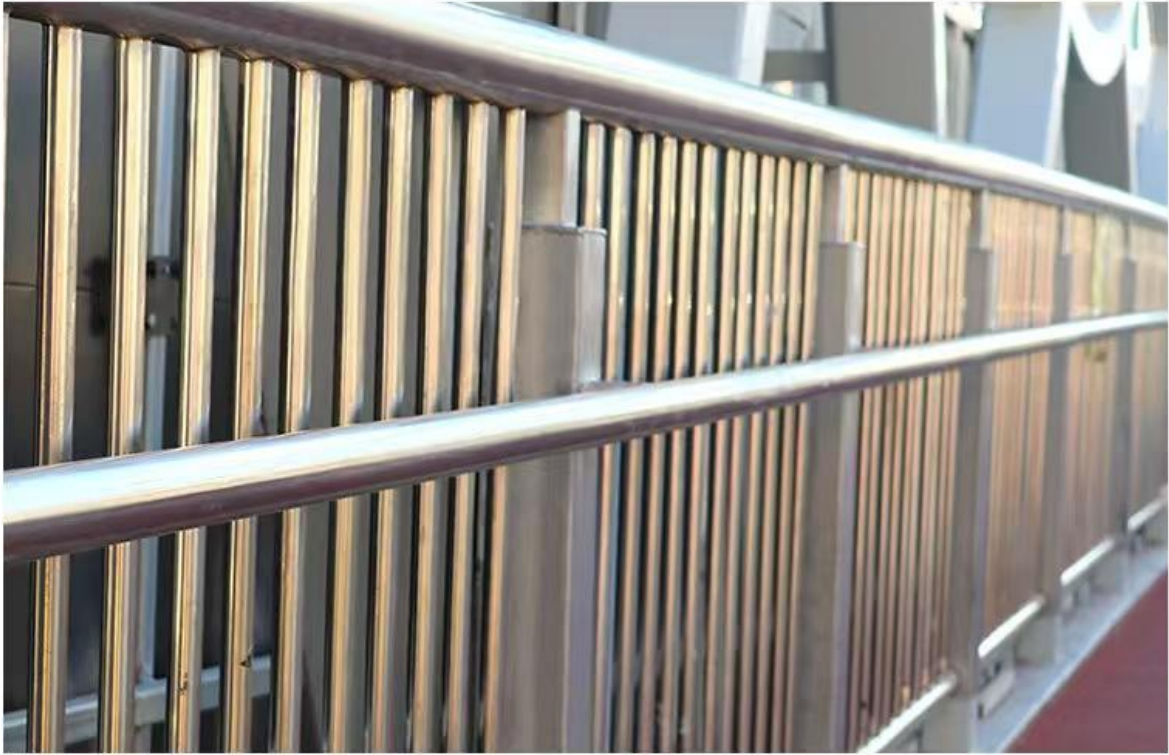
## Bridge Guardrail

Bridge guardrail is an important part of bridge, bridge guardrail can not only increase the beauty and brilliance of the bridge, but also play a good role in warning, blocking and preventing traffic accidents.

Bridge guardrail is mainly used in the surrounding environment of Bridges, overpasses, rivers, etc., which plays a protective role and can make Bridges and rivers more beautiful.



Bridge guardrail is generally made of iron plate, galvanized plate, stainless steel plate and other materials through cutting, welding, spray painting and other processes. It has the characteristics of strong impact resistance, good protection, corrosion resistance, long service life and so on.



## Anti-theft Dense Mesh

Anti-theft dense mesh, the use of low carbon steel wire welded into the net, the surface treatment is galvanized/dip/spray. It can be used in gardens, airports, residential areas, factories and other scenes. Common uses include airport anti-climbing nets, prison isolation nets and so on.



# Installation mode

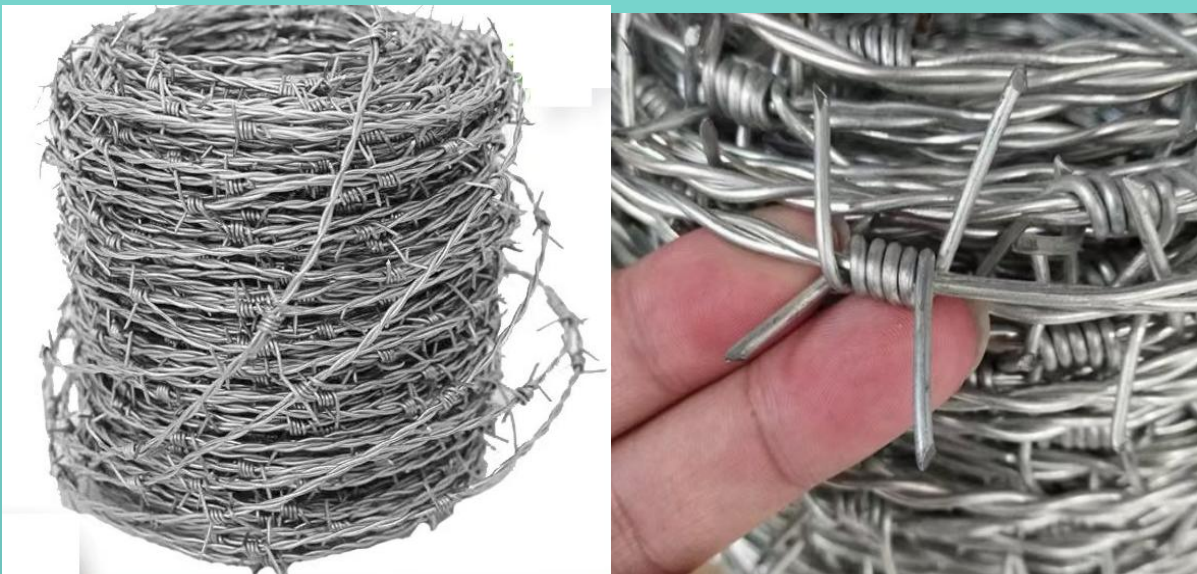


Anti-theft dense mesh can be used with blade thorn rope, anti-climbing thorn, anti-theft nail to play a better protective role.



## Barbed Wire

The barbed wire is made by winding the barbed wire on the main wire through a barbed wire machine, which is prepared by a variety of processes. The main materials are low carbon steel wire, hot and cold galvanized wire, stainless steel wire, aluminum clad steel, plastic coated wire. Thorn rope can be used for grassland boundary, railway, highway protection isolation protection, orchards, construction sites, communities, schools, roads, family walls, warning areas and so on.



Wire diameter specification 1.8/2/2.3/2.5/2.8/3.0 mm

According to the number of main silk is divided into single strand, double strand, three strands.

The surface of the barbed wire is usually treated by electroplating, hot-dip galvanizing or plastic-coated process, which can enhance the anti-rust ability of the barbed wire and extend the service life.

## Razor Barberd Wire

Blade barbed wire is mainly made of galvanized sheet or stainless steel sheet stamping out sharp blades, fixed with galvanized wire made of protective supplies. Product features: The color of the thorn rope is white and shiny, the zinc layer is thick, the blade is evenly distributed, the blade is sharp, not easy to rust, firm and durable, the support force is large, the tensile force is strong, the service life is long.



The razor barbed wire can be used in many schools, communities, homes, garden apartments, border posts, military fields, prisons, detention centers, government buildings and other national security measures.

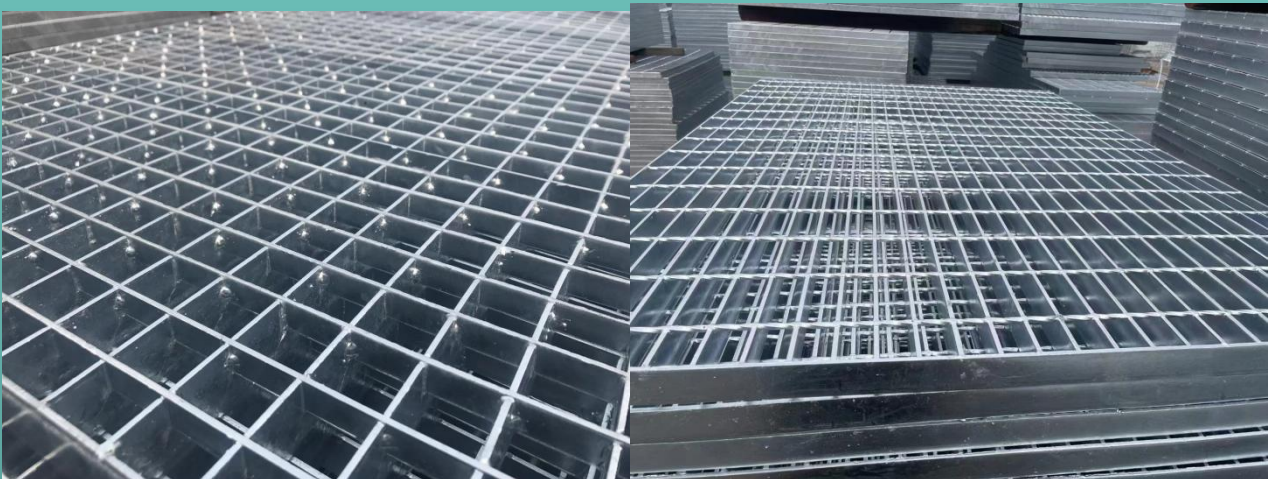
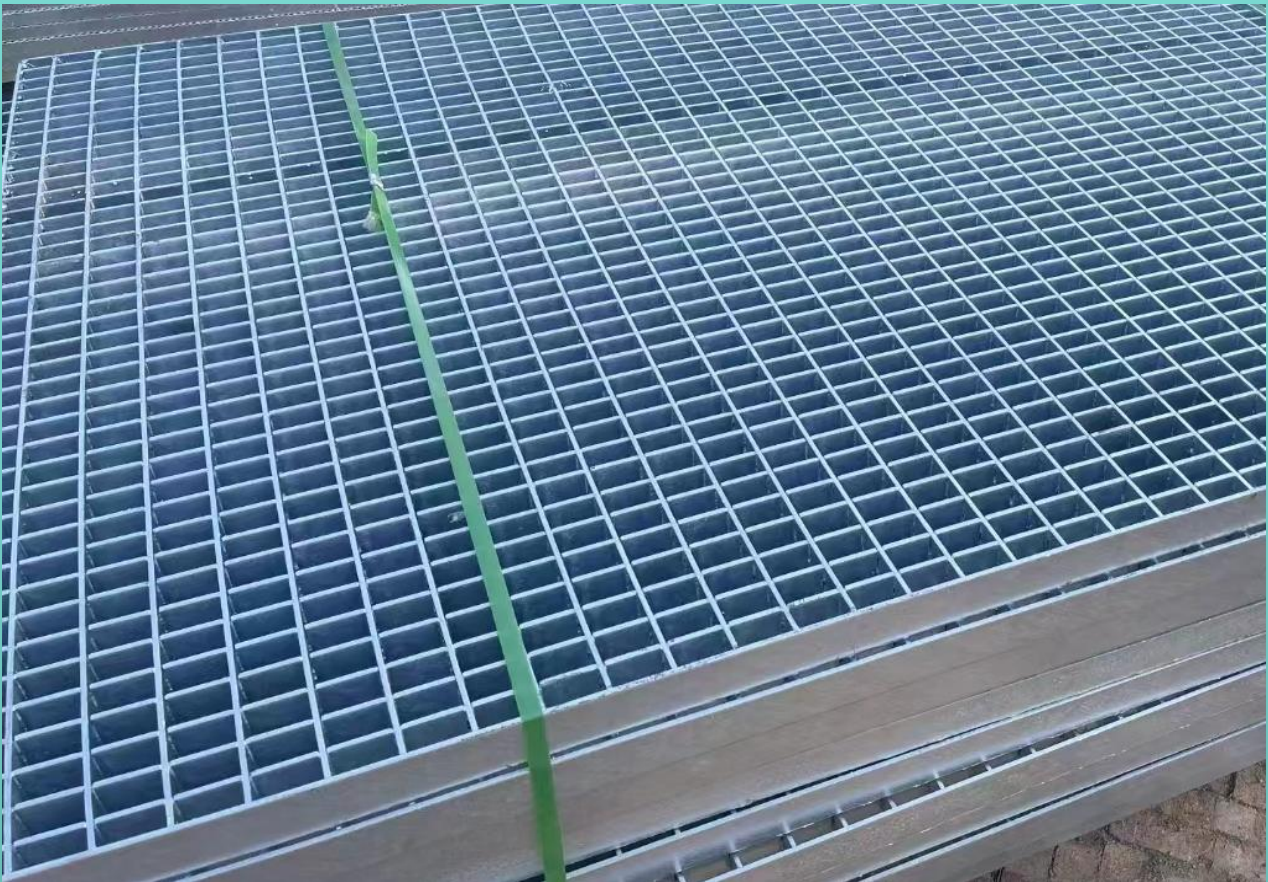
The razor barbed wire can be used with the guardrail net, or it can be directly installed on the wall.





## Steel Grating

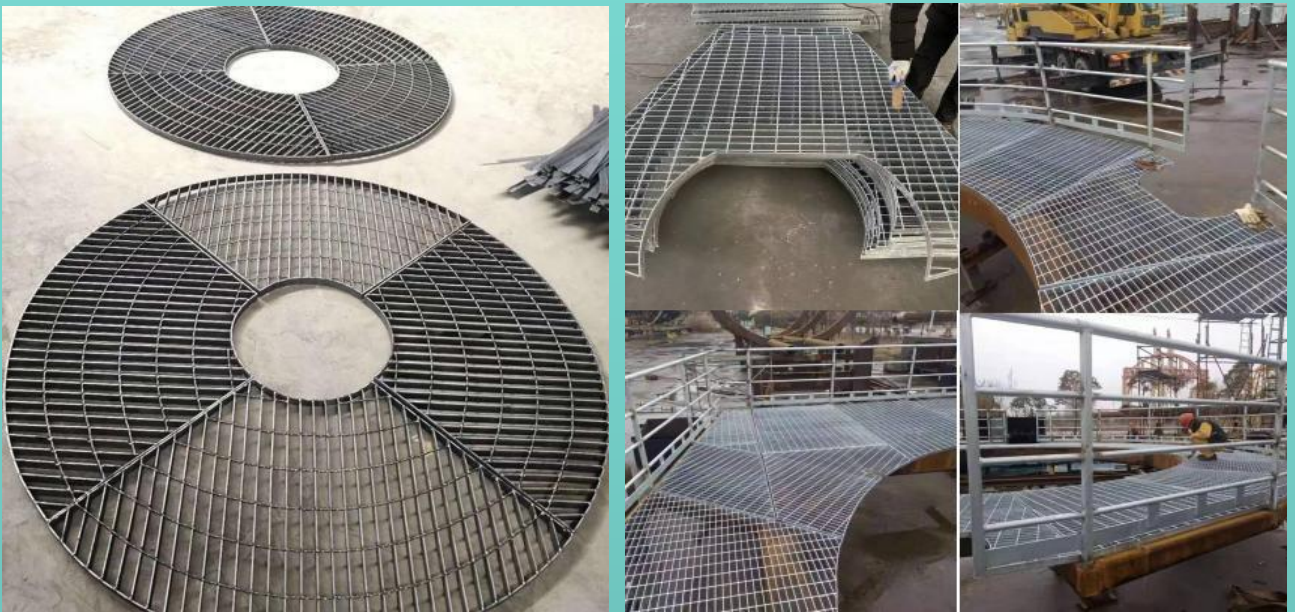
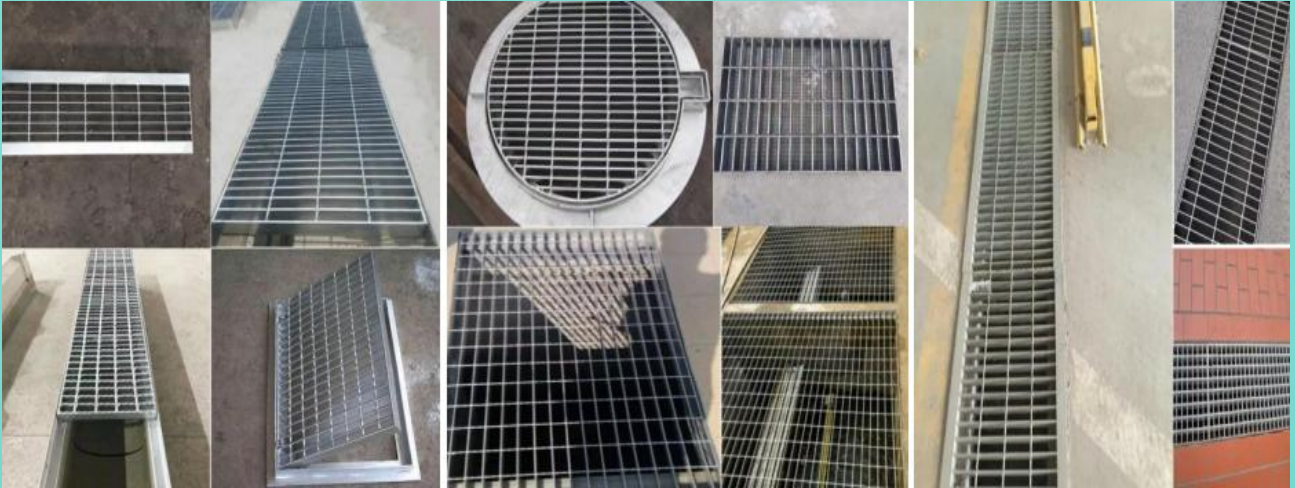
The steel grating is an open steel member which is composed of bearing flat steel and cross bar according to certain spacing and fixed by welding or pressure lock. The bar is generally twisted square steel, can also be used round steel or flat steel, the material is divided into carbon steel and stainless steel, the surface can be hot-dip galvanized treatment to make it look bright and clean.



Steel grating is suitable for metallurgy, building materials, power stations, boilers, shipbuilding, petrochemical, chemical and general industrial plants, municipal construction and other industries, mainly used to make steel structure platform plate, ditch cover plate, steel ladder step plate, building ceiling and so on.



It has the advantages of ventilation, light transmission, anti-slip, strong bearing capacity, beautiful and durable, easy to clean, easy to install and so on.

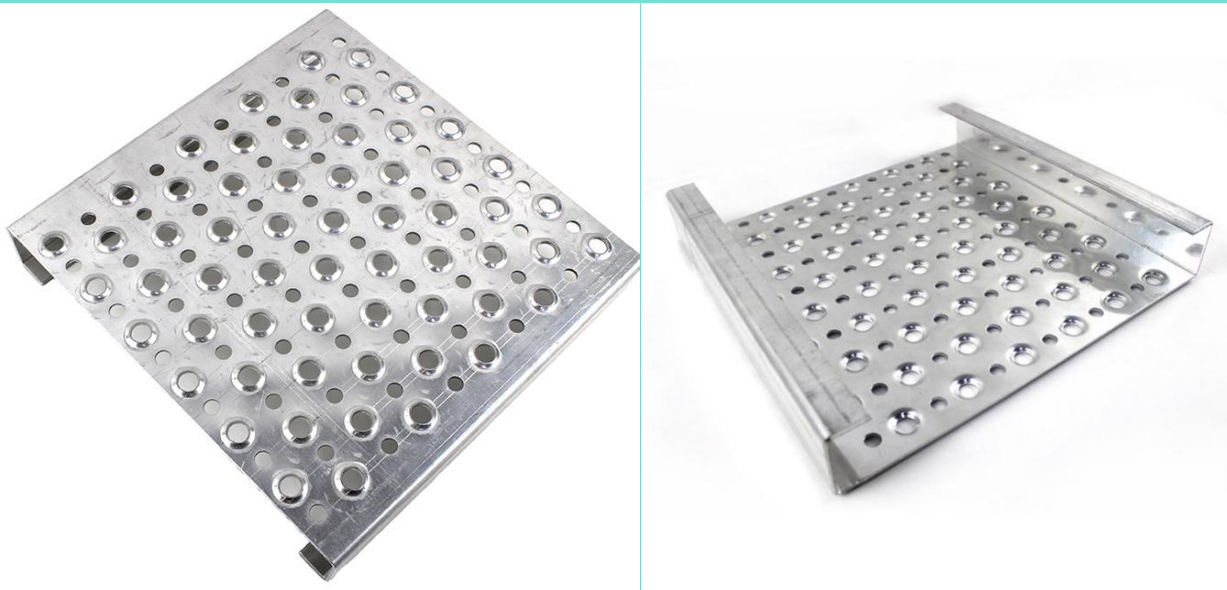


Use: Stairs

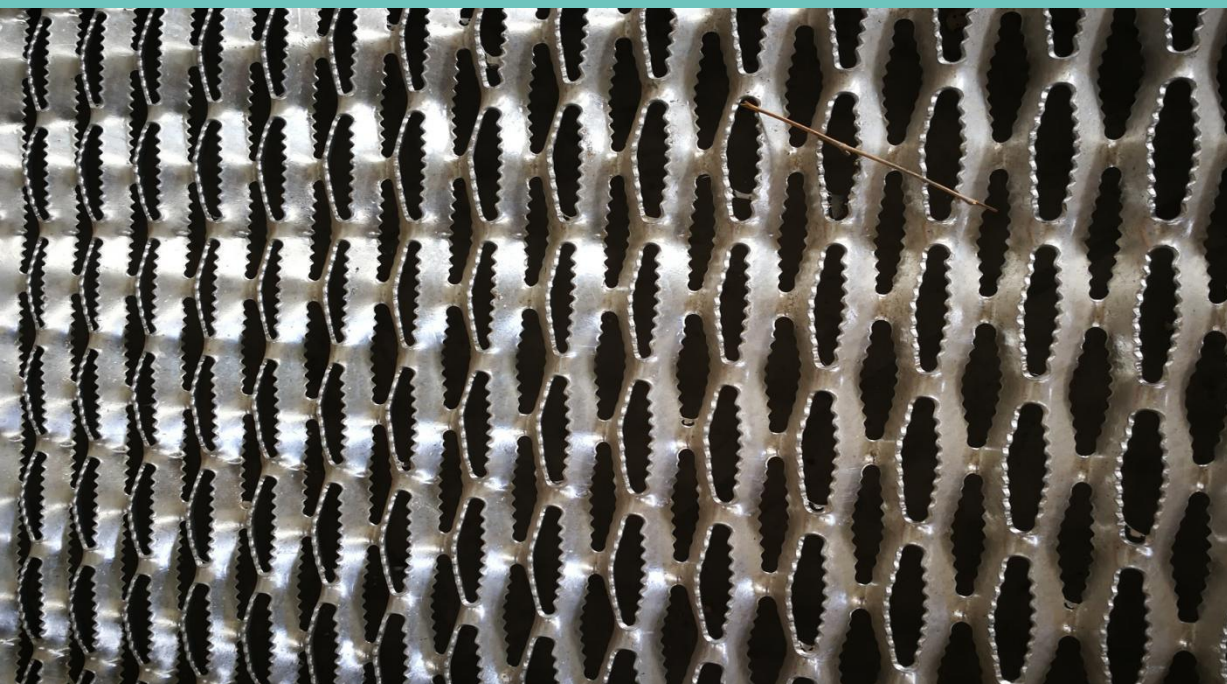


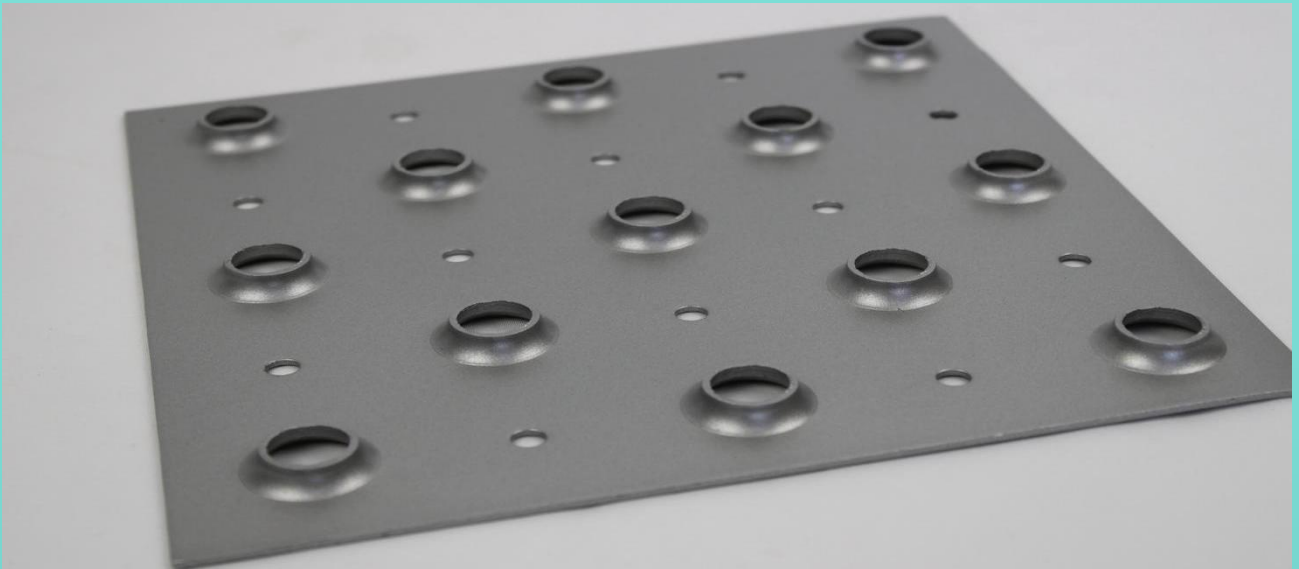
## Anti-skid Plate

The anti-slide is made by stamping, bending and welding process.



Anti-skid plate is suitable for sewage treatment, tap water, power plants and other industrial industries of the outdoor, anti-skateboard is also used for mechanical anti-slip and interior decoration anti-slip, dock, workshop, car bottom, cement floor, hotel door and so on.





## Packing

